



Hours

Mon-Fri: 9:30 - 7:00

Sat: 9:30 - 5:00

South Location

2428 West Ben White Blvd.

@ South Lamar

Austin, TX 78704

Phone: 512.476.6927

Fax: 512.476.6968

Toll Free: 1-800-725-8877

North Location

13945 Hwy. 183 North

@ Hwy. 620

Austin, TX 78613

Phone: 512.918.3743

Fax: 512.918.3912

contact@straitmusic.com



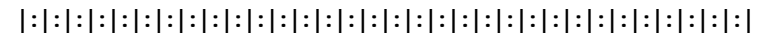
THE SGT. PEPPER SHOW

MAY 25, 2007 :: 7:30 & 10:00 PM

ST. DAVID'S EPISCOPAL CHURCH

304 E. SEVENTH STREET

AUSTIN, TEXAS



MAY 27, 2007 :: 8:00 PM

NUTTY BROWN CAFÉ

12225 HIGHWAY 290

AUSTIN, TEXAS



When it comes to Austin collision repair, you have a choice of where to take your vehicle. Many people choose and recommend **Longhorn Collision Center**. We want to be your Austin paint & body shop.

Longhorn Collision Center is a full-service Austin body shop. We are conveniently located in the heart of South Austin at 1607 South Lamar, just one mile south of the river. Look for the blue roof. We are open Monday through Friday, from 7:30 AM till 5:30 PM. Call us at (512) 441-DENT (441-3368)

Beginning in 1999, Will Taylor implemented a new idea after brainstorming with other local Austin musicians. Taylor began collaborating with both local and nationally renowned musical artists, rearranging their known material, brought in his own crew of seasoned jazz and contemporary roots musicians to play, and moved the performance venue from the traditional smoky club scene to the beautiful interior and excellent acoustics of a church sanctuary. Since then Will Taylor and Strings Attached have presented over fifty concert collaborations to 10,000+ audience members and countless more through KGSR and KLBJ live radio broadcasts, with numerous appearances on KUT, KMFA and KOOP radio.

The most recent recording, "Collaborations", is an enhanced CD which includes bonus video for computer. All proceeds benefit CASA of Travis County (www.casatravis.org). Please check out the group's website (www.stringsattached.org/store) for available releases.

Though individual members are accomplished soloists, when teamed up as Strings Attached, the landscape changes completely, as they expand the featured artist's vision into other-worldly territory, without sacrificing the intent or spirit of the original work.



www.stringsattached.org
www.myspace.com/stringsattached

Special thanks to www.beatlesarama.com, which offers Beatles music and interviews 24 hours a day!

Upcoming Shows

June 2, 2007

The Zeppelin Show (Threadgill's World Headquarters)

June 29-30, 2007

The Music of Pink Floyd

July 27-28, 2007

The Music of Joni Mitchell

August 31, 2007

The Music of Peter Gabriel (Hyde Park Methodist Church)

Volunteer Opportunities/Become a Friend of SA

In exchange for volunteering with Strings Attached, you receive a free CD and admission to the show. For more information on how to help, please contact Cindy Haynie: mogulette@austin.rr.com



- *Sexy new facility*
- *Relaxed, inspiring vibe*
- *High-end recording gear*
- *World class results*
- *Top notch production & engineering available*

www.hideoutstudios.com

512-789-3059

A MONTHLY JOURNAL OF AUSTIN STORIES

the good life
getta life...getta good life

P.O. Box 4400, Austin, Texas 78765
 Voice: 512-236-1618 Fax: 512-474-5725
hello@goodlifemag.com

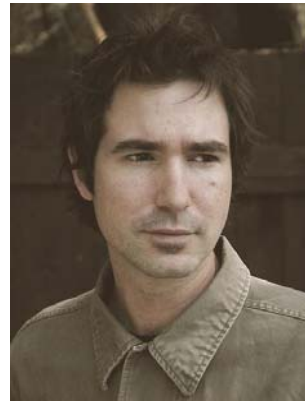
GUEST PERFORMERS



Rodney Connell



Jean Synodinos



Matt the Electrician



Libby Kirkpatrick



Wendy Colonna



Will Walden



Tony Scalzo



Coffee Sergeants



Billy Harvey



Molly Venter

STRINGS ATTACHED:

- Will Taylor – strings, producer
- Steve Zirkel – bass, trumpet
- Glenn Rexach – guitar
- Shawn Sanders – cello
- Martin Norgaard - violin
- Jeff Botta – drums
- Lauren Checchio - tabla
- Maimy Fong – keyboard
- Monica Cravotta – harmony vocals
- Amy E. Mitchell – harmony vocals
- Sarah Sharpe – harmony vocals

PRODUCTION:

Greg Stegal - Sound
Jim Bunch - Sound/Stage
Chet Himes - Live Radio Mix
Eli Smith - Live Recording Engineer
Cindy Haynie - Volunteer Coordinator
Bruce Meleski - House Manager
Sue Long - Ticket Sales
Cindee Segal - Program Design
Phil Judah - Printing
Charles Beard - Light Master
Melanie Martinez - Photography

(<http://flickr.com/photos/melaniemartinez>)

:: All photos copyrighted ::



For visualization of music, interactive light, environmental art, and psychedelic lightshows contact **Charles Beard** at chbeard@austin.rr.com. Make your concert, party, or other special event something to behold.



Primus Networks

Manage IT • Mitigate Risk • Deliver Value

www.primusnetworks.com

(512) 225-6500



Special thanks to KGSR for their continuing support. Tonight's 10:00 p.m. show will be broadcast live on 107.1 FM and online at www.kgsr.com.

THE SGT. PEPPER SHOW

:: Sgt. Pepper's Lonely Hearts Club Band [Rodney Connell] ::
With A Little Help From My Friends [Matt the Electrician] ::
Lucy In The Sky With Diamonds [Billy Harvey] :: Getting Better
[Wendy Colonna] :: I'm Fixing A Hole [Jean Synodinos] :: She's
Leaving Home [Molly Venter] :: Being For The Benefit Of Mr.
Kite! [Will Walden & Alex Rueb] :: Within You Without You
[Coffee Sergeants] :: When I'm Sixty-Four [Libby Kirkpatrick] ::
Lovely Rita [Tony Scalzo] :: Good Morning Good Morning
[Matt the Electrician] :: Penny Lane [Libby Kirkpatrick] ::
Strawberry Fields Forever [Rodney Connell] :: Sgt. Pepper's
Lonely Hearts Club Band (Reprise) [Rodney Connell] :: A Day
In The Life [Rodney Connell] ::

Sgt. Pepper's Lonely Hearts Club Band is often cited as the Beatles' magnum opus and the most influential album of all time by prominent critics and publications, ranking #1 on Rolling Stone's The 500 Greatest Albums of All Time in 2003. It was recorded by the Beatles over a 129-day period beginning on December 6, 1966. The album was released on June 1, 1967 in the United Kingdom and on June 2, 1967 in the United States.

Upon release the album was an immediate critical and popular sensation. Innovative in every sense, from structure to recording techniques to the cover artwork, the artistic effect was felt immediately.

Originally the group wanted the album to include a package with pins, pencils and other small Sgt. Pepper goodies but this proved far too cost-prohibitive. Instead, the album came with a page of cut-outs, with a description in the top left corner:

SGT. PEPPER CUT-OUTS

- Moustache
- Picture card of Sgt. Pepper
- Stripes
- Badges
- Stand-up of the band

The special inner sleeve, included in the early pressings of the LP, featured a multi-colored psychedelic pattern designed by the Fool. (from Wikipedia)